

When a Factory Becomes a Home

Chris
van Uffelen

Adaptive
Reuse for
Living

BRAUN



This unusual project is an adaptive reuse of a listed industrial building into housing in Hamilton's North End waterfront neighborhood, and part of the legacy of Hamilton's storied industrial history. The architects renovated the vacant industrial building into three large residential loft-style townhouses. The design inspiration was the similarity to the warehouse setting of the "Reservoir Dogs" movie by Quentin Tarantino. The finished product is a highly individualized design with customization and detailing of each dwelling, both inside and out. Colors, cabinets, finishes, lighting, and landscaping are all unique. Remnants of the past industrial history have been left intact as far as possible throughout the whole complex. The exterior design blends the historic character with modern steel, glass block, corrugated metal siding and custom-designed steel and glass elements.

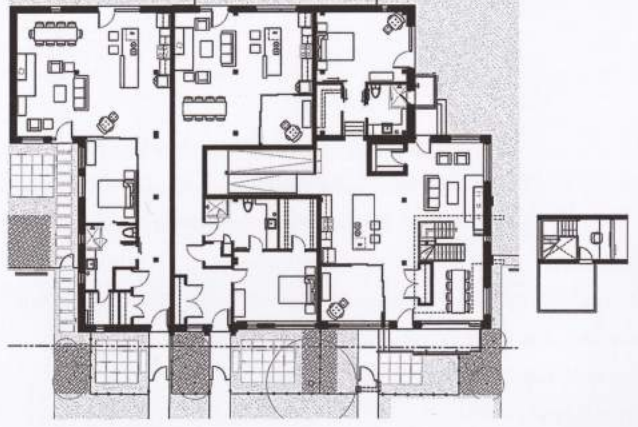


1910 → 2017

Inspired by the movie "Reservoir Dogs", this industrial building has been transformed into a comfortable home.



Architect TCA/Thier + Curran Architects **Completion** 2017 **Original building** Jobborn machine and tool fabrication shop, 1910 **Gross floor area before** 420.35 m² **Number of rooms before** 4 **Number of rooms after** 14 **Number of apartments** 3 **Number of residents** 8 **Address** 7-9-11 Brock Street, Hamilton L8L 4L5, Canada



Ground floor plan



The individualized design of the open rooms preserves the industrial character of the building.

